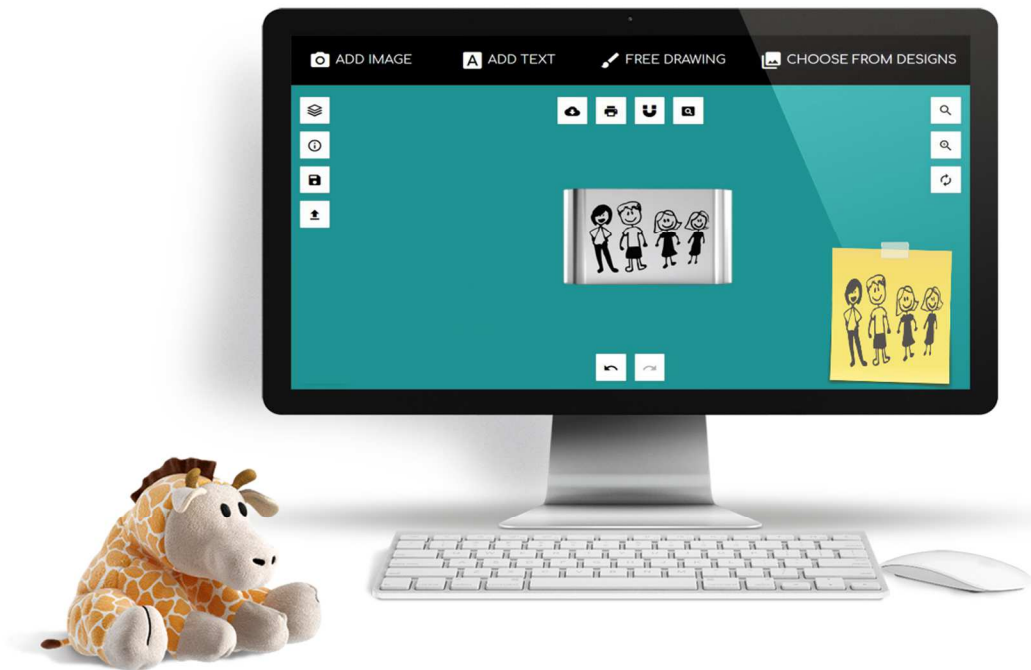


Kavalis

The Mark of Your Journey



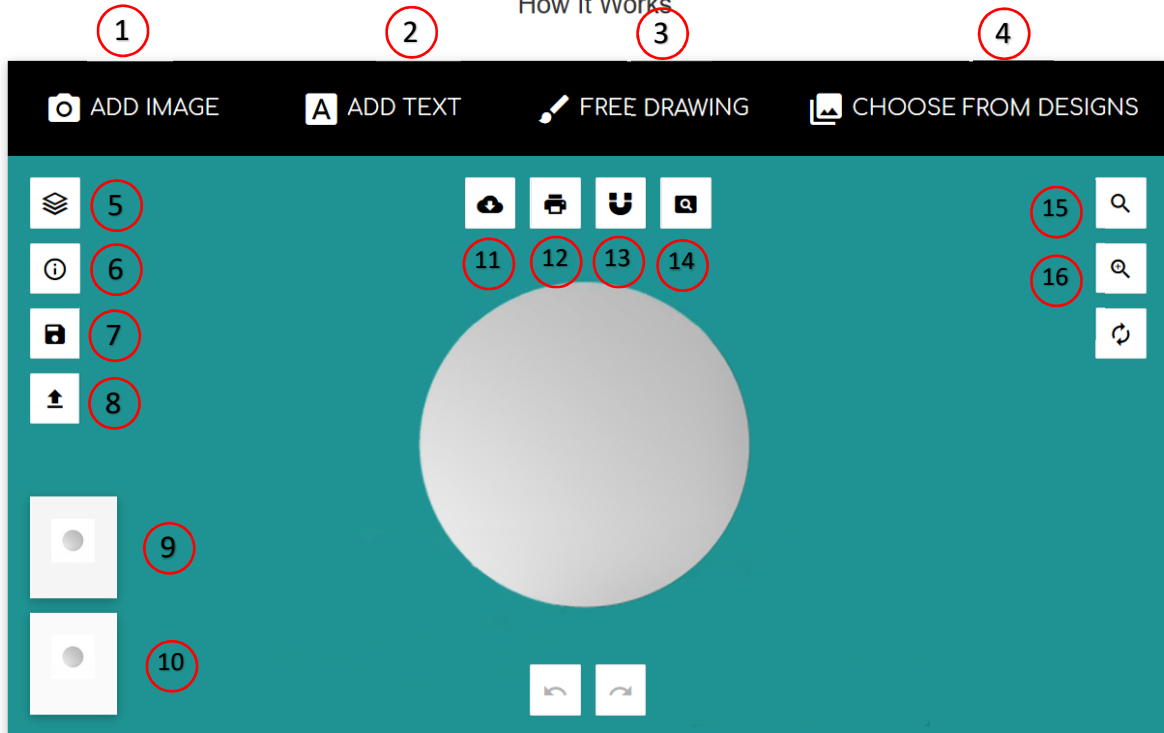
HOW TO USE THE DESIGN TOOL

The Designer Tools has 4 Main Categories to Choose from While Designing Your Pieces

1. **ADD IMAGE.** Allows you to upload your own vector Black and White Line Drawings. If you have a picture or photo that is not a vector black and white drawing, you need to convert it. We have detailed instructions on how to convert your custom pictures, on our website
2. **ADD TEXT.** Allows you to add text to your design. You can select different fonts and curved text
3. **FREE DRAWING.** Allows you to create free drawings to add to your designs
4. **CHOOSE FROM DESIGN.** Allows you to select from our library of drawing and icons.
5. **MANAGE LAYERS.** Allows you to delete layers from the design.
6. **INFORMATION.** May contain additional information and design tips.
7. **SAVE.** Allows you to save your design.
8. **LOAD.** Not used by the designer tool.
9. **FRONT.** Allows you to design the front of your piece. In some pieces can also design the back
10. **BACK.** Allows you to design the back of your piece.
11. **DOWNLOAD.** Allows you to download your design
12. **PRINT.** Allows you to print your design.
13. **CENTER SNAP.** Aligns your design in the center.
14. **PREVIEW.** Allows you to preview your design
15. **ZOOM IN.** Allows you to zoom in
16. **ZOOM OUT.** Allows you to zoom out
17. **RESET.** Resets your design

Custom Design

How It Works



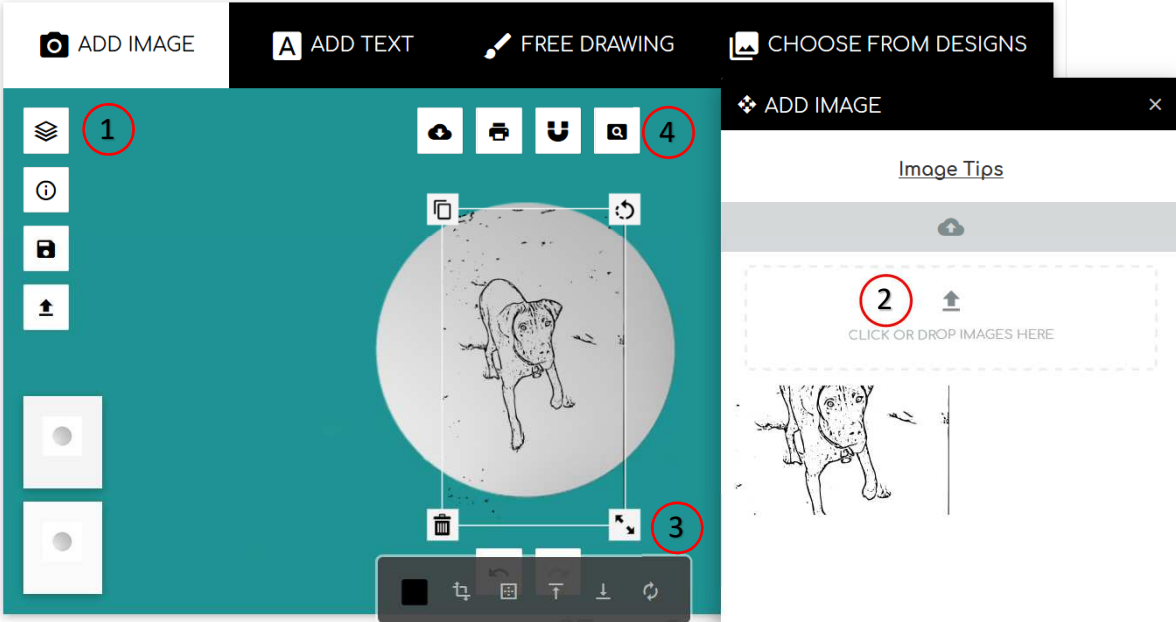
ADD IMAGE

All images uploaded should be Black & White Line Drawing Images. If you need to convert your images, you can download the instruction available in our website.

1. Select Manage Layers
2. Upload Converted Image
3. Adjust Size
4. Preview
5. Order

Custom Design

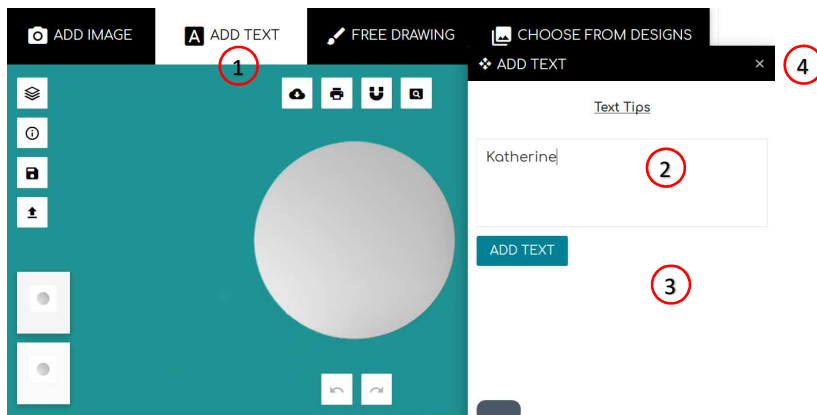
How It Works



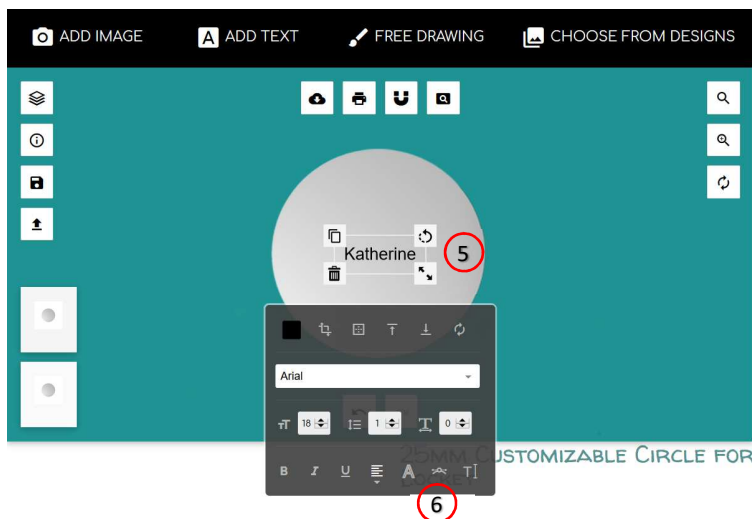
ADD TEXT

All images uploaded should be Black & White Line Drawing Images. If you need to convert your images, you can download the instruction available in our website.

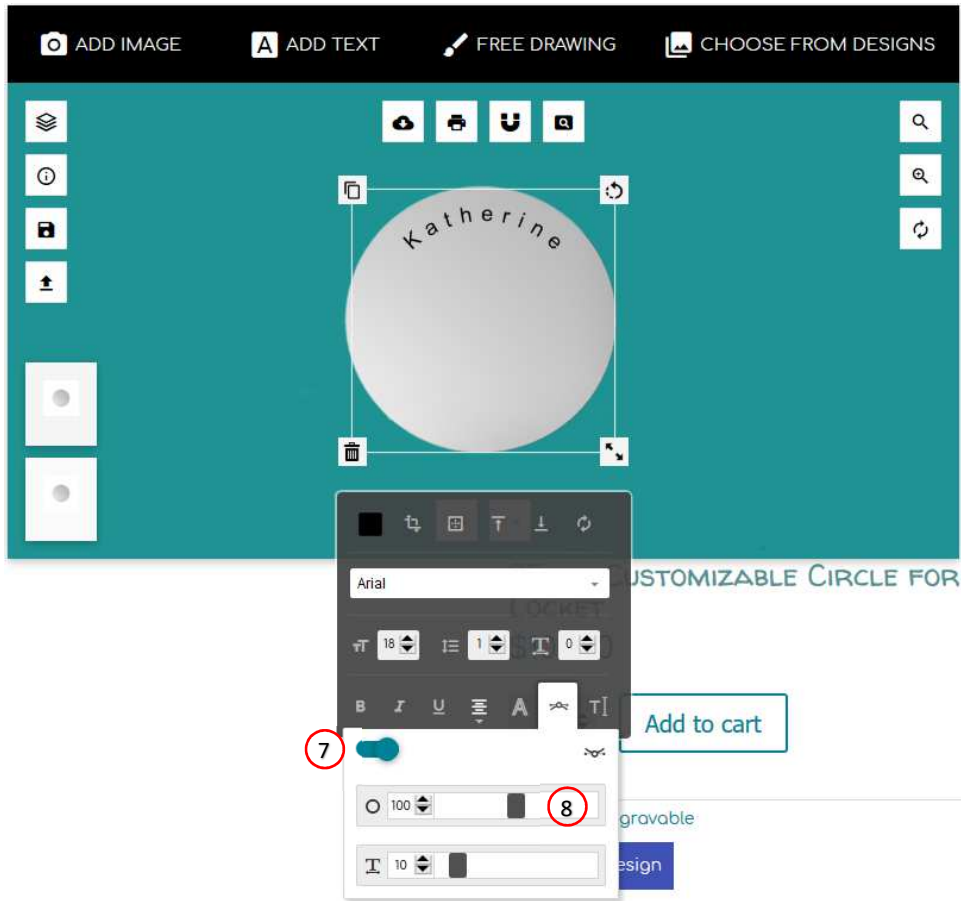
1. Click on ADD TEXT
2. Type Text to enter
3. Click on ADD TEXT
4. Close ADD TEXT Box



5. Click on Katherine to Change Text. We will make it curved.

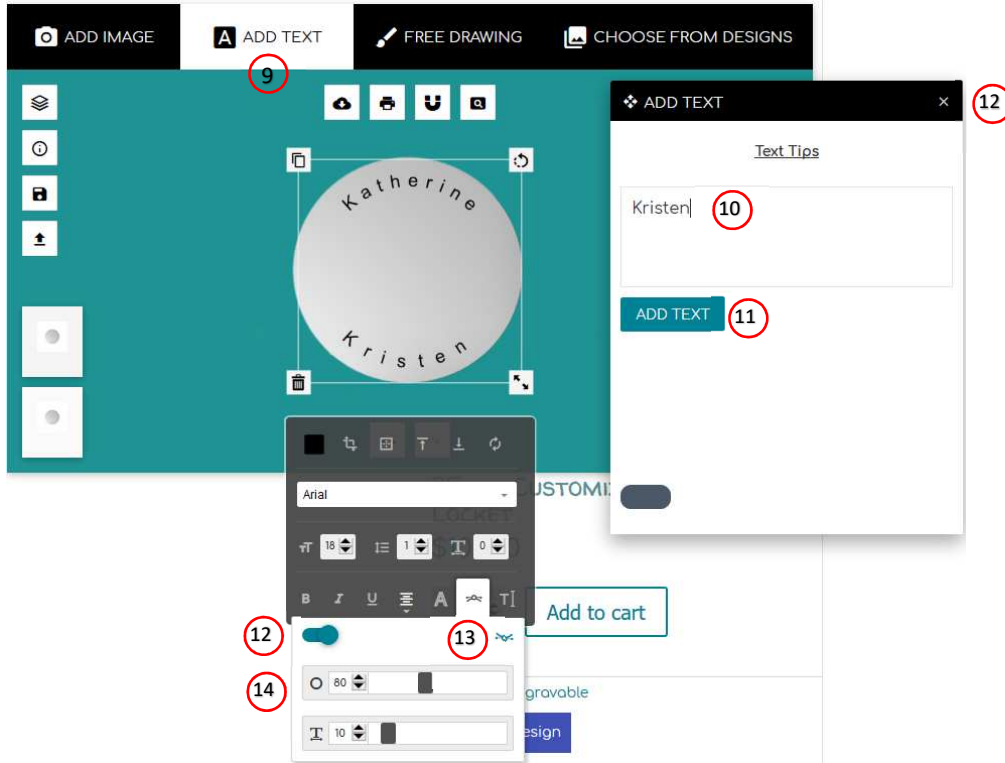


6. Click on curve
7. Select Switch
8. Move Radius to 100



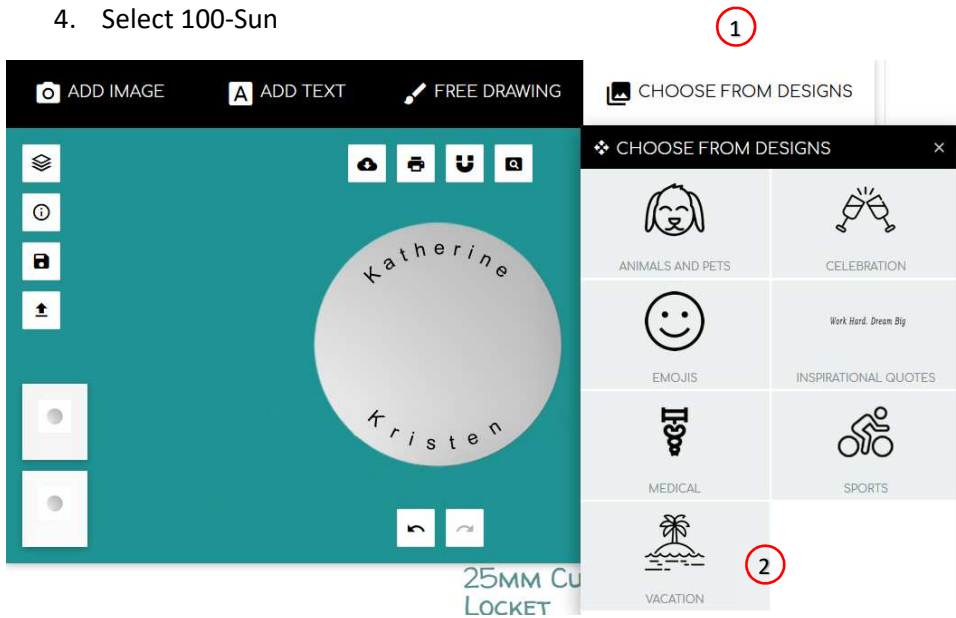
Now we will add another name, Kristen

9. Click on ADD TEXT
10. Type Kristen
11. Close ADD TEXT BOX
12. Select Switch
13. Select Reverse
14. Move Radius to 80



CHOOSE FROM DESIGNS

1. Click CHOOSE FROM DESIGNS
2. Select Vacation Group
3. Select Summertime Group
4. Select 100-Sun



❖ CHOOSE FROM DESIGNS ×

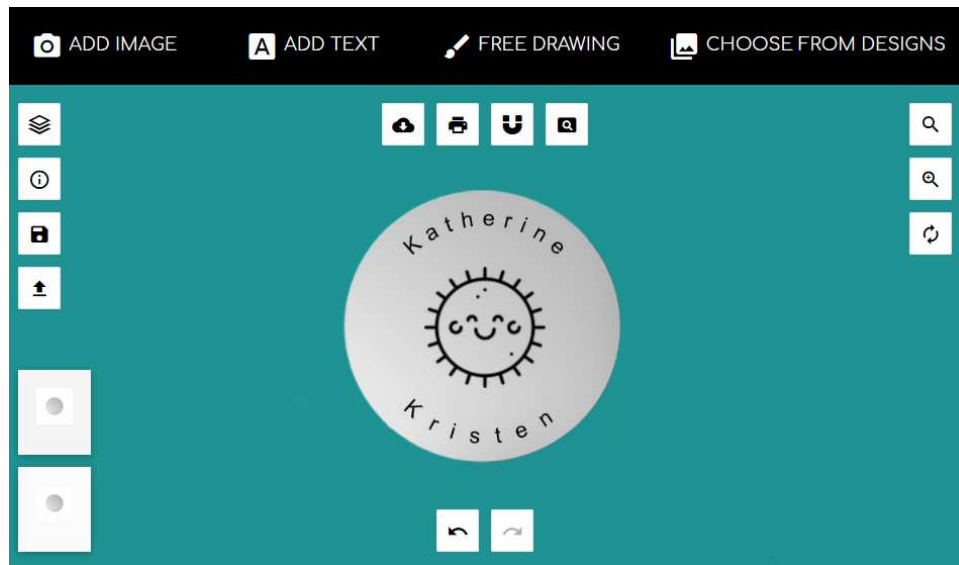
❖ CHOOSE FROM DESIGNS ×

Custom Design Tips

Custom Design Tips

VACATION

Q SUMMER TIME



FREE DRAWING

1. Click FREE DRAWING
2. Select Brush Type
3. Select Line Width
4. Draw
5. Click Add
6. Click on your drawing to adjust
7. Adjust for size, rotate if needed
8. Repeat until you have all the designs you want
9. Order your new design

